

In “Whose” Pew Do You Sit?

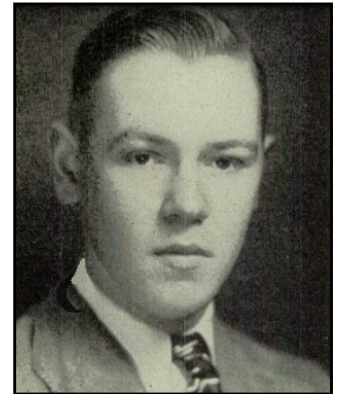
Michael P. Gleason, **ST. PATRICK'S**, Brewer

When **ST. PATRICK'S** finally “found a home” in the former St. Joseph's Roman Catholic Church at North Main and Holyoke Streets in Brewer, the neophyte congregation suddenly found itself in need of furnishings; chief among them were an altar and related accoutrements, and pews! Fortunately for us, shortly before our acquisition of the building, the Episcopal Diocese of Maine had just recently decided to deactivate **Canterbury House**, its student center at the University of Maine in Orono. For 50 years it had also served as the rectory of St. James' in Old Town (presently, there is no Canterbury House or organized Canterbury Club in Orono.). **ST. PATRICK'S** became the willing heirs of much of the House's furnishings

The altar crucifix (a *Christus Rex*, incidentally), altar rail, and lectern - all classic Danish-Modern - were donated to **ST. PATRICK'S!** (The Danish-Modern aspect is yet another story.) Along with those items came our pews, and those pews are the subject of this diatribe. The pews are classic “Maine Pine”, which set the tone for the décor of the new parish in Brewer.

With only one exception, every pew in the sanctuary bears a brass dedication plaque ‘Most every pew was/is dedicated in the memory of someone (there's just one pew which bears no brass dedication plaque at all!). The plaques on most of the pews bear the name of a congregation or Episcopal church organization within and from all over the Diocese of Maine, and the pews were donated by them with the specific intent of furnishing Canterbury House.

The plaque on the front-center pew on the church's Southeast side (the one normally occupied by the Gleasons) is dedicated to the memory of Richard Stone Lincoln, who was born in 1928 and died in 1945. There wasn't much information about him - no obituary could be found, and even a Google™ search came up “empty”. Undaunted, diligent research by Della Gleason found a listing on a website featuring U.S. high school yearbooks, where it shows that he attended Brunswick High School. He participated in swimming as a sophomore and junior, and was on the track team as a senior. He was also apparently a regular “*bon vivánt*” - it says, “‘Huck’ is an addition to any stag party - he never takes life seriously, and his good-natured humor is contagious. His pet hobby is pinball machines, and he has won more free games than anyone else in town”. His year of birth is listed on the dedication plaque as 1928, and it shows he died in 1945. It's easy to assume that he entered the military after graduation from Brunswick High in 1944, yet he is not one of the veterans from Brunswick who died in World War II. The pew was gifted to Canterbury House by the Guild of Trinity Church, Portland. According to Paula Levier, Parish Administrator at Trinity, “Richard died 27 December 1945 from Influenza Pneumonia, and was buried in Evergreen Cemetery, Portland, 29 December 1945”. (What an end for such a young ebullient spirit!)



Obviously, some of the pews were given merely as an act to donate an item of value to Canterbury House, and many were donated in memory of lost loved ones. Among them, though, are “the multiples”: In “First Place” are the five pews in memory of Sarah M. Hiscock. In “Second Place” are the four pews in memory of Edith (Nana) Foster, and in “Third Place” is Harry (Dick) Clifford. Unfortunately, not only do we not know much of anything about these people; we also don't know from whom or which Maine parish the many of the donations came. Also, their pews aren't co-located at **ST. PATRICK'S**, and one wonders if the installers ever even realized that there were dedication plaques affixed, because they could have created “sections” or “districts” - “The Hiscock District”, “the Foster District”, and “the Clifford District”, within the church!

There are many items in our humble church which were given in memory of loved ones. It's good to stop and read some of the dedication plaques, now and then, to keep the memory of those individuals in mind. To save you from having to crouch down and “squinch” to read the dedication plaques, many of which are now tarnished to some degree, here follows a “floor plan” of the pews and their dedications:

THE PEWS OF ST. PATRICK'S

To the Glory of God and In Memory of Robert Edward Bruns Born Jan 189, 1931 - Died Aug 30, 1978 Given by his wife, Pauline M. Bruns "Love never wrong, the neighbor, hence Love is the Fulfillment of the Law" Romans 13:10

Altar

To the Glory of God and In Memory of Hazen A. Polk Born Sept 22, 1898 Died Dec. 30, 1983 "Both in Life and Death, we are The Lord's" Romans 14:8

Altar Rail

Altar Rail

MUSIC GALLERY
(Pews and Frontal/Kneelers moved to the rear of the Sanctuary)

Frontal/Kneeler*
In Memory of Richard Stone Lincoln 1928 - 1945 by his parents and Trinity Guild, Portland

In Memory of Ethel Ingraham 1878-1958 Women's Auxiliary, Houlton

St. Mary the Virgin Falmouth Foreside

Women's Auxiliary Southwest Harbor

The Guilds of St. Luke's Cathedral

Women's Guild York Harbor

Guild of St. Mary the Virgin Falmouth Foreside

To the Glory of God and In Memory of Edith (Nana) Foster

To the Glory of God and In Memory of Harry (Dick) Clifford

To the Glory of God and In Memory of Harry (Dick) Clifford

THIS PEW AVAILABLE FOR MEMORIAL DEDICATION!

To the Glory of God and In Memory of Sarah M. Hiscock

Frontal/Kneeler
In Memory of Kenneth Charles Morton Sills, from St. Paul's, Brunswick

Women's Guild St. Mark's, Augusta

St. Saviour's Auxiliary and Guild Bar Harbor

Thanks for the Centenary of Christ Church Women's Auxiliary Eastport

Seabury Club St. Saviour's Bar Harbor

In Memory of the Members of the Mary Ella Merrill Guild and Women's Auxiliary, St. John's, Bangor

St. Luke's Guild Caribou

Frontal/Kneeler
To the Glory of God and In Memory of Harry (Dick) Clifford

To the Glory of God and In Memory of Edith (Nana) Foster

To the Glory of God and In Memory of Edith (Nana) Foster

To the Glory of God and In Memory of Harry (Dick) Clifford

To the Glory of God and In Memory of Sarah M. Hiscock

To the Glory of God and In Memory of Sarah M. Hiscock

To the Glory of God and In Memory of Edith (Nana) Foster

C
E
N
T
E
R
A
I
S
L
E

* Only one Frontal/Kneeler is dedicated:
In Memory of Richard Marden McCready & John Lowry McKay
By St. Martha's Guild, Good Shepherd, Houlton
(THIS MEANS THAT ONE PEW AND THREE FRONTALS/KNEELERS ARE AVAILABLE (with appropriate memoriam donation) FOR DEDICATION!)

Frontal/Kneeler
(Displaced by the Music Gallery)

Main Entrance - Holyoke Street

To the Glory of God and In Memory of Harry (Dick) Clifford

To the Glory of God and In Memory of Sarah M. Hiscock

St. Mary's Guild and Women's Auxiliary, Bath

To the Common Room